

DMS SETUP & CONTROL SOFTWARE

New Release version 0.999

Our most powerful and user friendly software for operating DMS sensors has been added to our web site at www.Philtec.com/firmware.htm

This **DMS Setup and Control Software** opens at

Com Port Tab

- select com port
- identify # of sensor channels or serial nos.
- change baud rate, bps

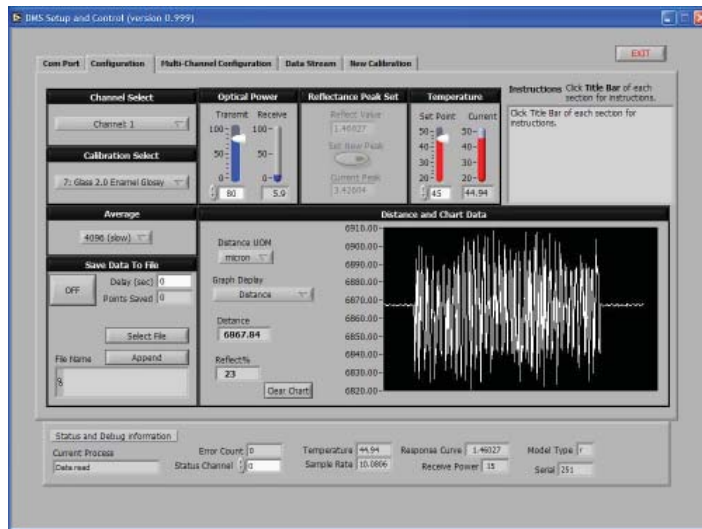
When the com port is opened 4 additional tabs become active:

Configuration

All the functions needed to setup a sensor for measurements are included in this tab:

- channel select
- Calibration select
- Optical Power
- Amplifier Temperature
- Optical Peak Set
- Data Averaging

The tab includes a live autoscaling graph to display distance, reflectance or temperature.



Multi-Channel Configuration

Simultaneously displays data from as many as 10 sensor channels.

Data Stream

Enables continuous recording of data at high speeds up to 5000 readings per second.



New Calibration

Enables new calibrations to be saved to sensor.

Saving Data To File

When data is saved to a file, all of the generated sensor data is saved with a time stamp.

Time Stamp

Time stamping data points enables post processing applications such as FFT analysis.

Version 0.999 includes 2 time stamps:

- a) Universal PC stamp accurate to 1 millisecond
- b) Delta Time - the amount of time between successive data points, accurate to 1 microsecond.