

DMS CONTROL SOFTWARE UPDATES

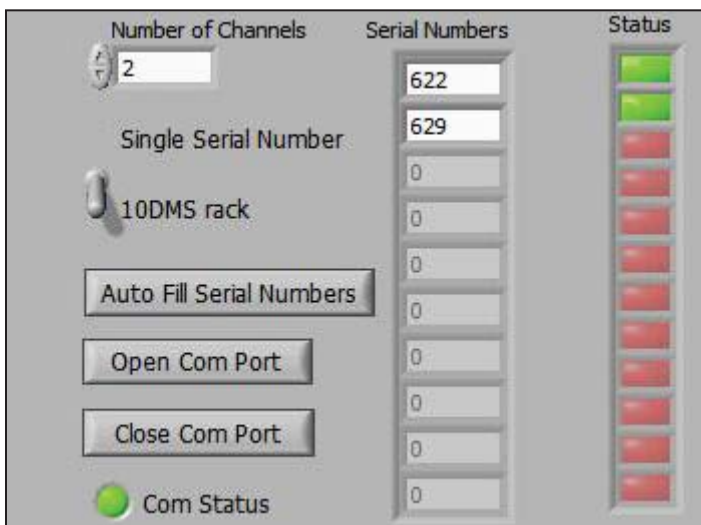
The DMS control software continues to evolve. Version 1.04 is now available at:

www.Philtec.com/firmware.htm

V1.04 has been upgraded from Version 0.999m with the following improvements/enhancements:

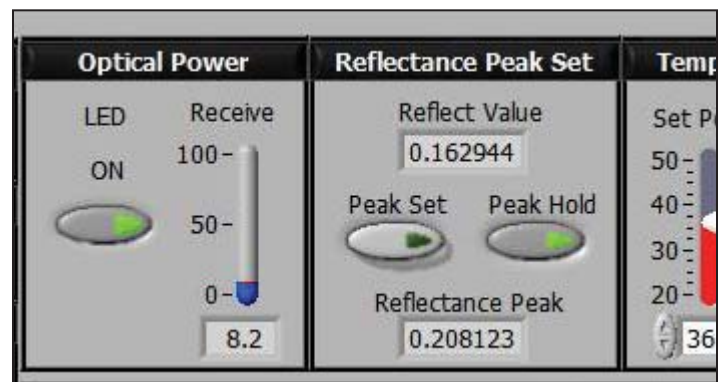
- Improved RS232 error recovery & retry
- Improved "Save Data To File" routine
- "Close Com Port" button added
- "Peak Hold" function added for D models
- Fixed bug in Multi-Graph Tab
- Average Control added to Multi-Graph tab
- Added option to not save data to file when running the Data Stream tab
- "Browse" button added for the log file
- RST (Reset) button added to Points Saved display
- Chart Display points bug fixed.

Close Com Port Button



Peak Hold

The Peak Hold feature makes it easy for users to calibrate D model sensors to their targets. Turn the Peak Hold button on, move the probe tip thru the optical peak region, and the Optical Peak is automatically set.



Average Control, Browse & RST Buttons

