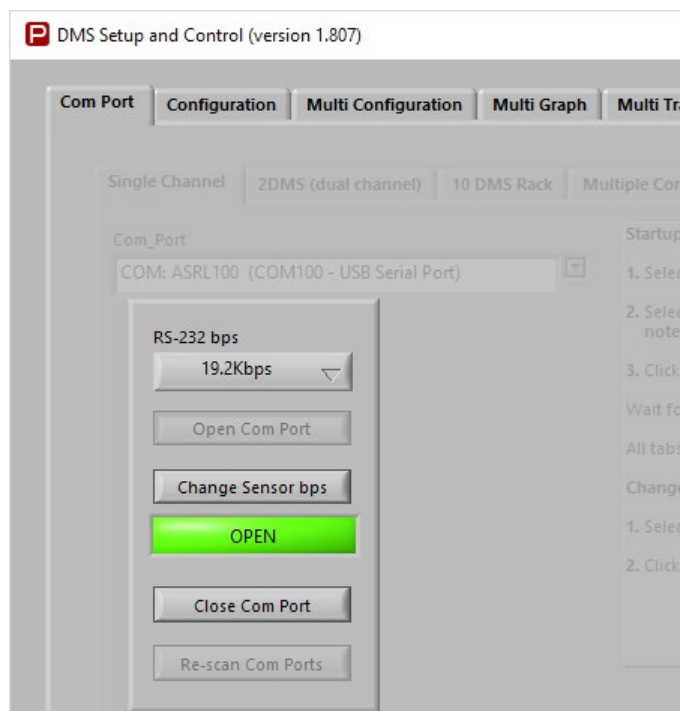
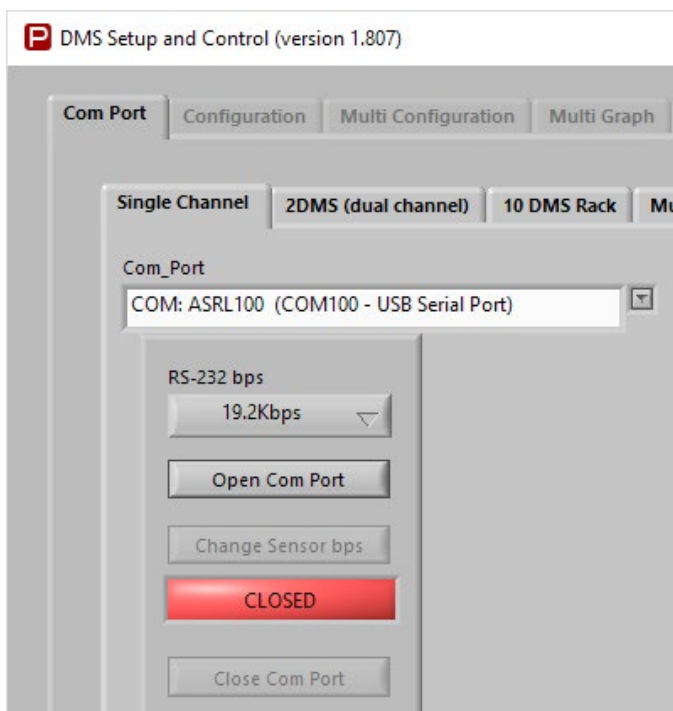


Quick Start Guide for DMS Sensors

1. Connect the AC/DC power adaptor to the sensor
2. Turn on AC power
3. Connect the RS232 line to your PC
4. Load Philtec's DMS Control Software into your PC
5. Open the DMS Control Software
6. At Single Sensor Tab, Select the com port to be used
7. Click Open Com Port
8. Click on Configuration Tab to set up the sensor controls



SOFTWARE & FIRMWARE UPDATES

DMS sensors can be updated remotely at any PC. The most current versions of operating software and firmware are posted at <http://www.philtec.com/downloadssupport/firmware.html>

PROCEDURE

Download the software and firmware update programs to your local hard drive.
Locate the .exe file and execute the program. Follow the on-screen instructions.

PHILTEC®

www.philtec.com

Fiberoptic Sensors for the Measurement of Distance, Displacement and Vibration

SETUP & CONFIGURATION

- 1. Temperature:** The factory preset is 35°C. Use the slide controls to set the temperature of the electronics. Allow the unit to reach steady state temperature prior to making any measurements. This can take 10 - 15 minutes. Raise the SET POINT ~3° higher than the unheated steady state temperature.
- 2. Calibration Select:** choose the **Mirror** calibration data table for smooth polished targets. Choose the **Diffuse** calibration data table for all other targets.
- 3. Average Filter:** select **2 averages** for highest sensor speed. select **4056 averages** for best resolution.
- 4. Optical Power :: read Receive Power.** The factory preset is with 20% transmit power. Move the sensor thru its operating range and note the highest Receive Power. Adjust the Transmit Power so that the receive power PEAK VALUE is a good signal but does not exceed 95%. The sensor will function normally with 1% or better receive signal power.

