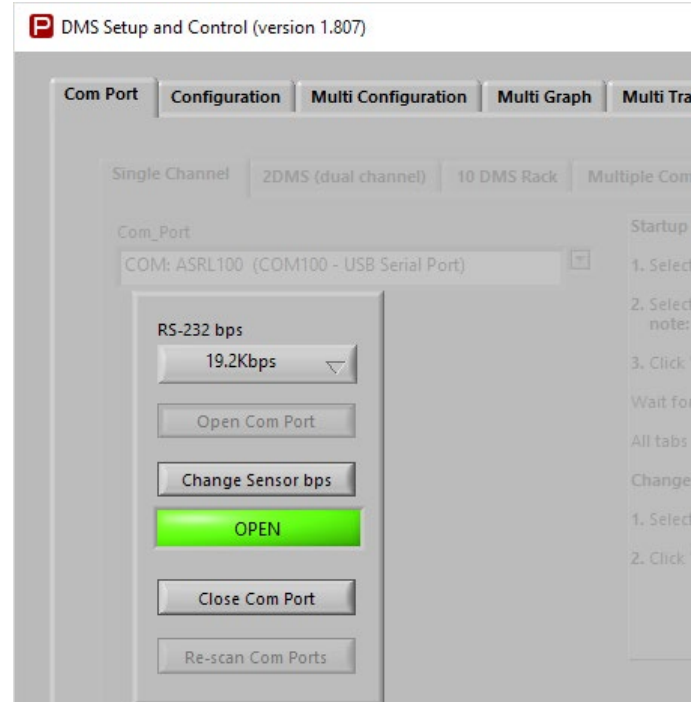
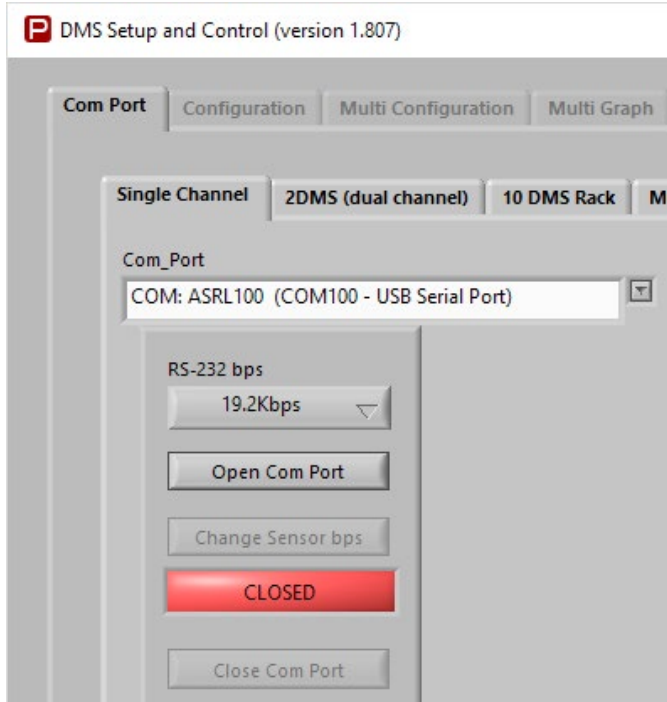


Quick Start Guide for mDMS Sensors

1. Connect the Y cable to the sensor.
2. Connect the AC/DC power adaptor to the Y cable
3. Connect the RS232 line to your PC.
4. Turn on AC power.
5. Load Philtec's DMS Control Software into your PC*
6. Open the DMS Control Software
7. At Single Channel Tab, Select the com port to be used
8. Click 'Open Com Port'
9. Click on Configuration Tab to set up the sensor controls



SOFTWARE & FIRMWARE DOWNLOADS

*DMS sensors can be updated remotely at any PC. The most current versions of control software and firmware are posted at <http://www.philtec.com/downloadssupport/firmware.html>

PROCEDURE

Download the software and firmware update programs to your local hard drive. Locate the .exe file and execute the program. Follow the on-screen instructions.

PHILTEC®

www.philtec.com

Fiber optic Sensors for the Measurement of Distance, Displacement and Vibration

SETUP & CONFIGURATION

- 1. Temperature:** The factory preset is 35°C. Use the slide controls to set the temperature of the electronics. Allow the unit to reach steady state temperature prior to making any measurements. This can take 10 - 15 minutes. Raise the SET POINT ~3° higher than the unheated steady state temperature.
- 2. Calibration Select:** choose the **Mirror** calibration data table for smooth polished targets. Choose the **Diffuse** calibration data table for all other targets.
- 3. Average Filter:** select **2 averages** for highest sensor speed. select **4056 averages** for best resolution.
- 4. Optical Power :: read Receive Power.** The factory preset is with 20% transmit power. Move the sensor thru its operating range and note the highest Receive Power. Adjust the Transmit Power so that the receive power PEAK VALUE is a good signal but does not exceed 95%. The sensor will function normally with 1% or better receive signal power.

DMS Setup and Control (version 1.805)

Com Port Configuration Multi Configuration Multi Graph Multi Trace New Calibration Admin F_Cal F_Scan F_Admin

Channel Select
Serial:2006 ch:1

Calibration Select
1: Mirror (specular)

Average
16

Optical Power
Transmit: 20, Receive: 42.4

Reflectance Peak Set
Reflect Value: 4.89543
Peak Set, Peak Hold
Reflectance Peak: 7.37407

Temperature °C
Set Point: 35, Current: 34.94

Graph Display
Sensor Curve
Distance: 778.686
Reflect%: 98
Peak to Peak: 0.0019455
Auto Scale ON
Tare Scale OFF
Max: 4.8968, Min: 4.8946
Display Points: 1000
Tare: 4.8954
Max - Min: 0.0000
Tare Reset

Distance and Chart Data
4.89680
4.89660
4.89640
4.89620
4.89600
4.89580
4.89560
4.89540
4.89520
4.89500
4.89480
4.89460

Distance UOM: mI
Save Data to File: OFF
Delay (sec): 0
Points Saved: 0
File Name: RST